



International Palliative Care
Family Carer Research Collaboration

International Palliative Care Family Carer Research Collaboration (IPCFRC) Newsletter

September 2012, Issue 9

1. Welcome

Welcome to the latest edition of the International Palliative Care Family Carer Research Collaboration (IPCFRC) newsletter.

2. IPCFRC background

The IPCFRC vision is to improve evidence based support provided to family carers of palliative care patients via interdisciplinary and international research initiatives. The IPCFRC operates under the auspices of the European Association for Palliative Care (EAPC) and the administrative office is based at the Centre for Palliative Care, (c/o St Vincent's Hospital and collaborative Centre of The University of Melbourne, Australia). For information on the background to the establishment of the IPCFRC, its collaborators, and its objectives please refer to the IPCFRC website: ipcfrc.centreforpallcare.org

3. Membership

The IPCFRC now has over 120 registered members from many countries of the world, including; Australia, Bulgaria, Cameroon, Canada, Denmark, France, Germany, Ireland, Japan, New Zealand, Nigeria, Norway, Spain, Sweden, Thailand, UK & USA.

IPCFRC Membership provides the opportunity to be affiliated with a professional organisation, to collaborate with other researchers who share similar interests and research goals, and to remain up to date with the latest research related to family carers and palliative care. Individual membership is free-of-charge. To formalise your membership please go to the membership page of the IPCFRC website and complete the form.

4. Membership Database

In order to promote collaboration amongst IPCFRC members we will be sending out an updated list of all members, their affiliation, email address, and areas of research interest, along with this newsletter (to IPCFRC members only).

5. Recent family carer related publications

The IPCFRC tracks research and review publications that relate to family carers. For a list of recent publications, please visit the resources page of our website.

Some recent publication highlights include;

Janssen, D et al *"Symptom distress in advanced chronic organ failure: disagreement among patients and family caregivers."* Journal of Palliative Medicine, 2012 Apr;15(4):447-56. Epub 2012 Apr 4.

Henriksson, A. et al. *"Effects of a support group programme for family members of patients with life-threatening illness during ongoing palliative care."* Palliative Medicine, 2012 May 8. [Epub ahead of print]

Gauthier, Lynn., Gagliese, Lucia. *"Bereavement Interventions, End-of-Life Cancer Care, and Spousal Well-Being: A Systematic Review."* Article first published online: 20 MAR 2012
DOI: 10.1111/j.1468-2850.2012.01275.x

Bekelman, D. et al. *"Giving voice to patients' and family caregivers' needs in chronic heart failure: implications for palliative care programs."* Journal of Palliative Medicine, 2011 Dec;14(12):1317-24. Epub 2011 Nov 22.

Demiris, G., et al. *"A Noninferiority Trial of a Problem-Solving Intervention for Hospice Caregivers: In Person versus Videophone."* Journal of Palliative Medicine, 2012 15;6. DOI: 10.1089/jpm.2011.0488

6. Call for Papers

Palliative Medicine has announced a call for papers for a forthcoming special edition which will focus on family carers in palliative care and is guest edited by Prof Sheila Payne and Prof Gunn Grande.

Further details via <http://mc.manuscriptcentral.com/societyimages/palliative-medicine/Palliative%20Medicine%20Call%20for%20papers%202012.pdf>

7. IPCFRC Endnote Library

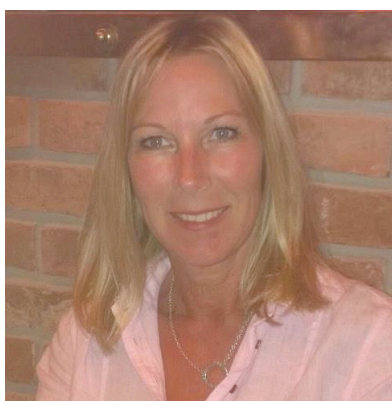
The IPCFRC Endnote library is regularly updated. It is a comprehensive library of research and review articles related to family carers (including family carers in the context of palliative care, other illness groups eg aged care, mental health and disabilities). It is available for download under the resources section of our website.

Please note: You will need to have the Endnote program on your computer in order to open the file.

Members are welcome to contribute articles to the library by emailing them to centreforpallcare@svhm.org.au with the subject heading 'IPCFRC'.

8. Steering committee member profile

Each newsletter we profile one of the IPCFRC's steering committee members. In this edition we welcome a new member of the steering committee, Anette Henriksson.



DR ANETTE HENRIKSSON is a specialist cancer care nurse who has worked at the Palliative Care Unit at Dalens Hospital in Stockholm for almost 20 years. This specialist palliative care unit consists of a home care section integrated with an inpatient ward. Anette conducted her doctoral studies at the School of Health and Medical Sciences, Örebro University and at the Health Care Sciences Postgraduate School, Karolinska University, and during this time she was also a member of the research group at the Palliative research center, Ersta Sköndal University College, Sweden. She finished her thesis in May 2012 and her research focused on a support group programme for family members of patients with life-threatening illness during ongoing palliative care. Anette will now continue her work as a fulltime researcher at The Palliative research center, Ersta Hospice, Ersta Sköndal University College. Her new role includes a mission to link research with practice and she will also continue to work as a specialist nurse .

9. Research funding

For an up to date list of International funding opportunities please visit:

<http://www.caresearch.com.au/caresearch/tabid/458/Default.aspx>

or the University of Melbourne's research grants page:

<http://www.research.unimelb.edu.au/rgc/grants/find/international/internationalfunding/>

10. Conferences

19th International Congress on Palliative Care 2012

The 19th Congress will be held at Montreal, Canada from October 9-12th 2012. For more information please visit: <http://www.palliativecare.ca/en/index.html>

Joint meeting of the International Psycho-Oncology Society (IPOS) 14th World Congress & Clinical Oncological Society of Australia's (COSA) 39th Annual Scientific Meeting

The joint meeting of IPOS and COSA will be held at the Brisbane Convention and Exhibition Centre, Brisbane, Australia from 13th – 15th November 2012. For more information please visit: <http://www.ipos-cosa.org/>

For a list of other conferences related to palliative care, please visit

<http://www.caresearch.com.au/caresearch/tabid/74/Default.aspx>

11. Carer Intervention symposium

The presentations for the Cancer Experiences Collaborative (CECo) 'Family Carer Interventions' Workshop held in Gateshead, UK at the Palliative Care Conference on 14 March 2012 are now available.

Please click on this link: <http://www.ceco.org.uk/activities/presentations/index.php>

12. IPCFRC Meetings

Upcoming

There will be an open meeting of the IPCFRC at the 19th International Congress on Palliative Care in Montreal, Canada. This is on Wednesday 10th October 2012 at 1740 and will be chaired by Peter Hudson. The venue is located in the conference program.

Recent

There was an open meeting of the IPCFRC, at the EAPC Research Congress 2012 in Trondheim, Norway and was chaired by Professor Shelia Payne and Professor Gunn Grande.

13. Contributions

We would like to encourage members to contribute to the IPCFRC: newsletter, endnote library, or to add relevant resources to the IPCFRC website. Please email us at: centreforpallcare@svhm.org.au with the subject heading 'IPCFRC'.

14. Further information

For further information please contact the IPCFRC administrative office on +61 3 9416 0000 or email: centreforpallcare@svhm.org.au with the subject heading 'IPCFRC'.

Thank you for your interest.